

COMPOSITE MOTORIZED ALTERNATING VALVE INSTALLATION GUIDE

V3069FF-01 WS1/125 MAV F-F 3WIRE V3069MM-01 WS1/125 MAV M-M 3WIRE

WARNING: USE ONLY SILICONE-BASED LUBRICANTS ON ALL CLACK CORPORATION COMPONENTS
HYDROCARBONS WILL DAMAGE COMPONENTS THAT CONTAIN O-RINGS AND OR PLASTIC. THIS CAN CAUSE LEAKS OR BREAKAGE. DO NOT USE LUBRICANTS THAT CONTAIN HYDROCARBONS SUCH AS VASELINE®/PETROLEUM JELLY, WD-40®, ETC. DO NOT USE CLACK CONTROL VALVE PRODUCTS ON WATER SUPPLIES THAT CONTAIN HYDROCARBONS, SUCH AS BENZENE, GASOLINE, KEROSENE, ETC.

OPERATING PRESSURES: 20 PSI - 125 PSI

OPERATING TEMPERATURES: 40°F - 110°F

PARTS INCLUDED:

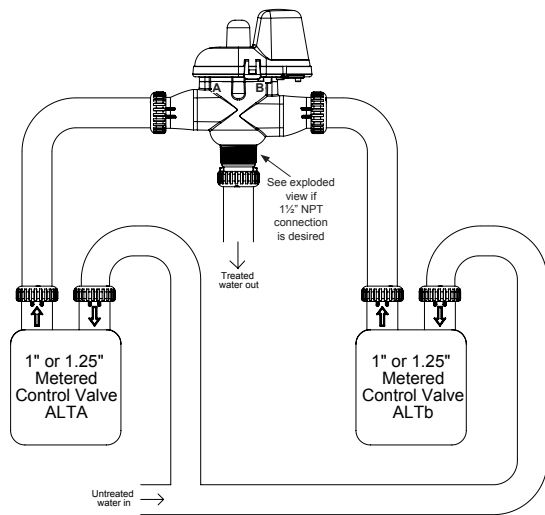
- MAV • MOTORIZED ALTERNATING VALVE
- V3474 • WS ALT CONNECT CORD 8 FT BLK
- V3805 • STRAIN RELIEF COVER KIT

If the control valve manual does not include programming instructions for setting up Simple Twin Alternating (ALT A and ALT B), Separate Source (SEPS), or No Hard Water Bypass (NHBP), please contact your local equipment supplier for current instructions.

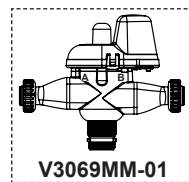
Cables: To bring in additional cables through the back plate, first locate the strain relief knockout on the inside of the back plate (lower-right side). Use a punch and hammer to remove the knockout. Remove one or both tabs in the strain relief on the back of the back plate with a needle nose pliers. Bring the additional cables through the knockout hole through the back plate and connect each cable to the proper location on the PCB. This will determine how much slacks needed in the cable before weaving into the strain relief. Once cables are weaved into the strain relief, use the V3805 strain relief cover kit (provided) and follow instructions for installation.

MAV—Simple Twin Alternator: This system allows one valve to be in service (online), while the second valve remains in standby (offline). Thread the V3474 Connect Cord through the back plate and connect to the PCB three-pin connector labeled COMM CABLE on each valve programmed ALT A and ALT B. Thread the MAV cable through the back plate and connect to the PCB two-pin connector labeled MAV on the valve programmed ALT A. If the control valve is in an error state during regeneration mode, the MAV will close the B port and keep open the A port until the errors corrected and reset.

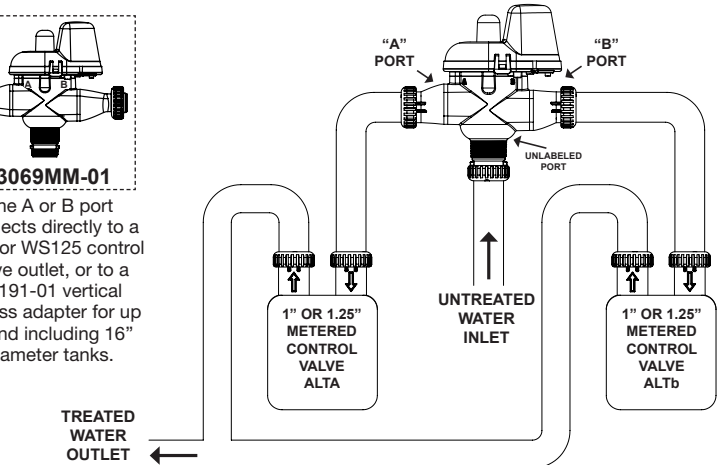
REGENERATION WITH HARD WATER



REGENERATION WITH SOFT WATER

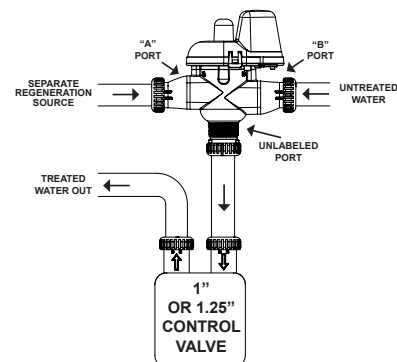


V3069MM-01
The A or B port connects directly to a WS1 or WS125 control valve outlet, or to a V3191-01 vertical bypass adapter for up to and including 16" diameter tanks.



NOTE: When using the above setup, replace all V3003 meters with V3003-02 meters.

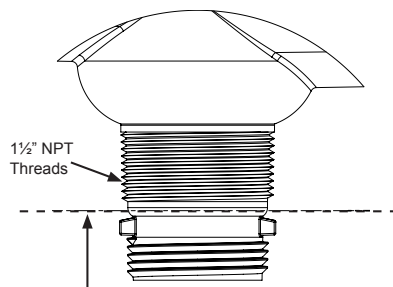
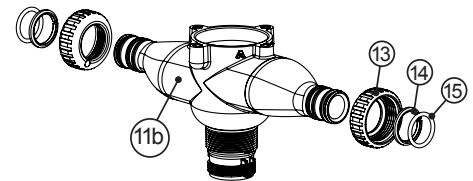
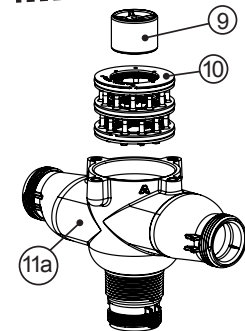
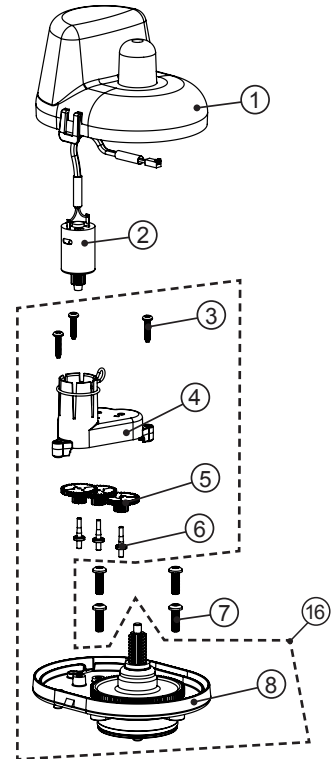
MAV—Simple Source Regeneration: This system allows a separate water source used for regeneration. When in Service Mode, the MAV will close water flow between the A port and C port (separate regeneration source) and open water flow between the B port and C port (untreated water). Thread the MAV cable through the back plate and connect to the PCB two-pin connector labeled MAV. Program the valve as SEPS. If the control valve enters an error during regeneration mode, the MAV will remain in its current state until the errors corrected and reset.



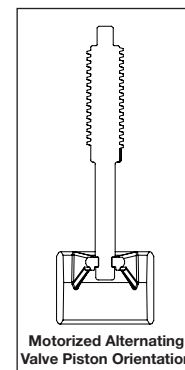
COMPOSITE MOTORIZED ALTERNATING VALVE INSTALLATION GUIDE

1.0"/1.25" MOTORIZED ALTERNATING VALVE • V3069FF-01			
Drawing No.	Order No.	Description	Qty.
1	V3073	MAV/NOHWBY COVER ASY	1
2	V3476	WS MOTOR ASY 8 FT	1
3	V3592	SCREW #8-3/4 PHPN T-25 SS	3
4	V3262-01	WS1.5&2ALT/2BY REDUCGEARCVRASY	1
5	V3110-01	WS1 DRIVE REDUCING GEAR PLAIN	3
6	V3264	WS2 BYPASS REDUCTION GEAR AXLE	3
7	V3527	SCREW 1/4-20 X 3/4 BHSCS SS	4
8	V3072	MAV/NOHWBY 1/125/15 DRIVE ASY	1
9	V3506-01	MAV/NOHRD 1/125/15 PISTON	1
10	V3074	MAV 1/125/15 STACK ASY	1
11a	V3504FF	MAV BODY 1/125 ASY F-F	1
12	V3042	WS1/1.25/1.5 MAV & NHWB SERVICE PACK	
Not Shown	V3474	WS ALT CONNECT CORD 8FT BLK	1
	V3805	STRAIN RELIEF COVER KIT	

1.0"/1.25" MOTORIZED ALTERNATING VALVE • V3069MM-01			
Drawing No.	Order No.	Description	Qty.
1	V3073	MAV/NOHWBY COVER ASY	1
2	V3476	WS MOTOR ASY 8 FT	1
3	V3592	SCREW #8-3/4 PHPN T-25 SS	3
4	V3262-01	WS1.5&2ALT/2BY REDUCGEARCVRASY	1
5	V3110-01	WS1 DRIVE REDUCING GEAR PLAIN	3
6	V3264	WS2 BYPASS REDUCTION GEAR AXLE	3
7	V3642	SCREW 1/4-20 X 1 1/4 BHSCS SS	4
8	V3072	MAV/NOHWBY 1/125/15 DRIVE ASY	1
9	V3506-01	MAV/NOHRD 1/125/15 PISTON	1
10	V3074	MAV 1/125/15 STACK ASY	1
11b	V3504MM	MAV BODY 1/125 ASY M-M	1
12	V3042	WS1/1.25/1.5 MAV & NHWB SERVICE PACK	
13	V3151	WS1 NUT 1 QC	2
14	V3150	WS1 SPLIT RING	2
15	V3105	O-RING 215	2
Not Shown	V3474	WS ALT CONNECT CORD 8FT BLK	1
	V3805	STRAIN RELIEF COVER KIT	
	V3191-01	WS1 BYPASS VERTICAL ADAPTER ASY	



Quick Connect Nut Threads can be cut off to allow access to 1 1/2" NPT Threads. Deburr and clean edge after cutting.
NOTE: Teflon tape is required when using the 1 1/2" NPT Threads.



This product is Tested and Certified by NSF International against NSF/ANSI/CAN Standard 61 for material requirements and NSF/ANSI/CAN 372.